

Overview

The Los Angeles Superior Court has installed a Digital Evidence Presentation System (DEPS) in certain courtrooms throughout L.A. County for attorney use. *Note: This system is different from the DEPS currently used in the Governor George Deukmejian Courthouse (Long Beach).*

DEPS Courtrooms & Instructions

To find out where DEPS is available and/or to access instructions for attorneys, please visit the court's website (www.lacourt.ca.gov) and go to either:

DEPS Courtrooms

1. *General Info > Contacts & Locations > Courthouses > Directory of Los Angeles County Courthouses > Courthouse from Contacts and Locations* section, and under *Divisions and Courtrooms* section, click *Courtrooms* to view DEPS column; or
2. *General Info > Courtroom Directory* and look up a specific courtroom.

DEPS Instructions

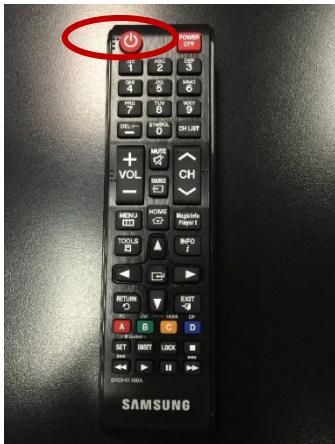
1. *Attorneys > Court Information and Tools > Courtroom Information > Resources > Digital Evidence Presentation System (DEPS) > Directory of DEPS Courtrooms > Digital Evidence Presentation System (DEPS) Quick Reference Guide for Attorneys* hyperlink.

Operation

1. Turn on Equipment (Attorney or Courtroom Staff)

Courtroom Monitor

- a. Press the **Power On** button on the Courtroom Monitor remote.



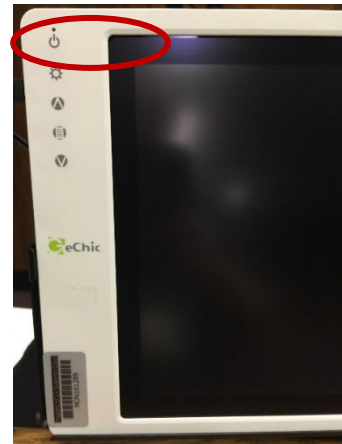
WolfVision Visualizer

- b. Pull the WolfVision Visualizer arm ring gently upward (model may vary).



Witness Monitor

- c. Press the **Power** button on the Witness Monitor (model may vary).

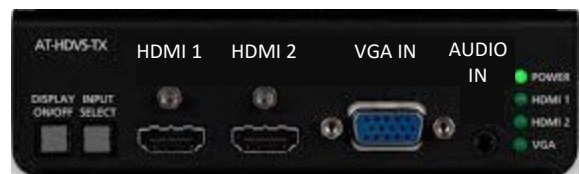


2. Connect Devices to Attorney Table (Attorney)

- **Non-Apple HDMI 1.1 devices** (laptop, tablet, smart phone, and video player):
 - Can be connected using either a:
 - HDMI cable; or
 - VGA cable and 3.5mm AUX audio cable.
 - Screen Resolution setting must not exceed 1920 x 1080 (1080p); and
 - Text Scale must be set to 100%.

Note: Use of higher settings may cause screen to flicker.

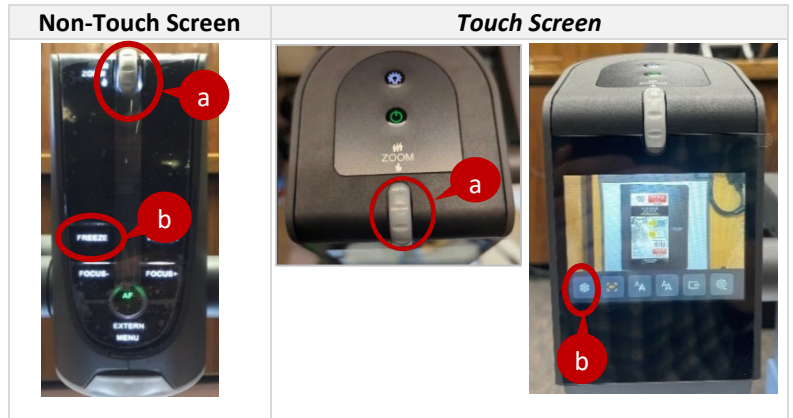
- **Apple devices** (e.g., laptop, iPad, iPhone) **and other HDMI 2.0+ devices** (some Windows and Android devices) can be connected using only a:
 - VGA cable and 3.5mm AUX audio cable.




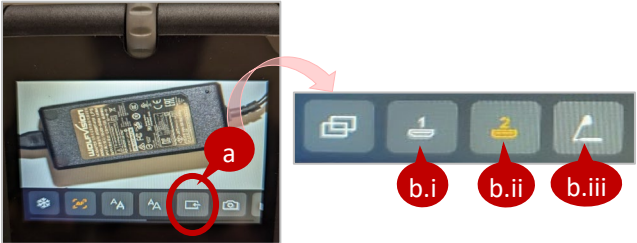
3. Use Visualizer Camera (Attorney)

- a. Use the Zoom wheel to zoom in (down) or out (up).
- b. Press the **FREEZE** button to temporarily freeze the camera; press the **FREEZE *** button again to unfreeze the camera.

Note: Documents will usually be displayed using the attorney's computer, in which case the view can be switched from landscape to portrait as needed. However, if using the camera working surface to display a hard-copy document, each page with a "portrait" orientation (taller than wide) may need to be moved up and down manually to see all content.



4. Switch Between Visualizer Sources (Attorney)

| Non-Touch Screen | Touch Screen | |
|---|--|--|
| <ol style="list-style-type: none"> a. Press the EXTERN button as needed to switch between the Camera, Attorney Table 1, and Attorney Table 2.  | <ol style="list-style-type: none"> a. Press the INPUT button. b. Press the applicable button as needed to switch between the i. Attorney Table 1, ii. Attorney Table 2, and iii. Camera.  | |

5. Switch Between Attorney Table Inputs (Attorney)

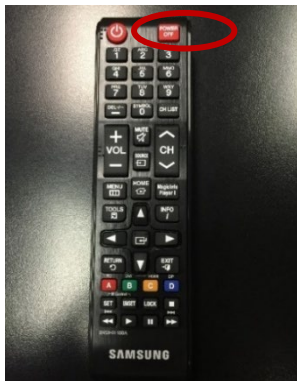
Press the **INPUT SELECT** button on the Attorney Switch Box to switch between devices connected at the respective attorney table. *Note: The Attorney Switch Box automatically detects devices plugged into each of the 3 input ports and functions independently from the Visualizer selector switch. Pressing INPUT SELECT toggles to the next port whether or not anything is connected to it. LEDs on the right side of the switch illuminate to indicate which port is currently selected.*



6. Turn Off Equipment (Attorney or Courtroom Staff)

Courtroom Monitor

- a. Press the **Power Off** button on the Courtroom Monitor remote.



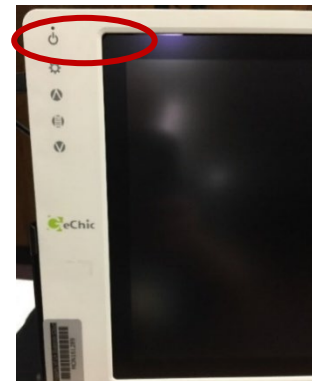
WolfVision Visualizer

- b. Pull the WolfVision Visualizer arm ring gently downward (model may vary).



Witness Monitor

- c. Press the **Power** button on the Witness Monitor (model may vary).



Support

For technical assistance, please contact staff in the applicable courtroom.

Note: To ensure you have the most current version of this document please visit the court's website at lacourt.org and search for "DEPS."