



ADOPTED BUDGET FISCAL YEAR 2025-2026

Superior Court Of
Los Angeles County

TABLE OF CONTENTS

3	Court's Vision, Mission, & Values
4	Strategic Focus Areas
5	Budget At A Glance
6	Financing Uses / Expenditures
7	Judges and Executive Office
8	Judicial and Executive Support
9	Office of Court Strategy and Innovation
10	Communications and External Affairs
11	Finance and Administration
12	Human Resources
13	General Counsel Office
14	Court Technology Services
15	Operations
	Operations Administration
	Juror Services
	Region 1
	Region 2
	Region 3
	Region 4
	Courtroom Support
23	Grants
24	Special Revenue Funds
25	Revenue Sources
26	Court Funding Sources

COURT'S VISION, MISSION, & VALUES

Vision

Our Court will be accessible to all, trusted by all, and just for all.

Mission

The court serves our community by providing equal access to justice through the fair, timely, and effective resolution of all cases.

Our Values

People Focused: We prioritize the needs of the individuals we serve, our court employees, and judicial officers.

Transformative Through Innovation: We are committed to continuing to grow and improve through innovative solutions and embracing new technologies and approaches.

Data-Informed: We use data and facts to inform policy, administrative, and operational decisions.

Collaborative: We work together across the Court and with our justice partners, stakeholders, and the community we service.

Steward of Public Trust: We maintain the public's trust and confidence by upholding the highest ethical standards, being accountable for our actions, and being transparent about processes and the use of resources.

Strategic Focus Areas

- Enhance accessibility and transform the Court user experience.
- Build the public's trust in the Court.
- Streamline case resolution and Court operations.
- Develop an engaged and future-ready workforce and judicial bench.
- Develop an innovative, agile, and forward-looking Court.

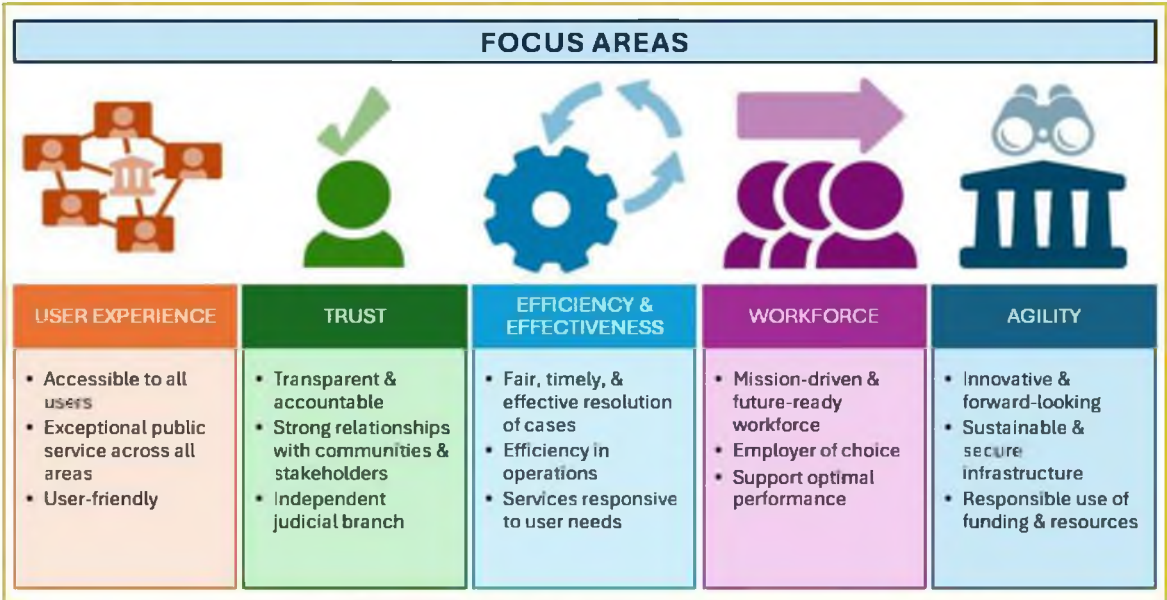
2025 - 2028 Strategic Plan – Superior Court of Los Angeles County

CORE VALUES

- People-Focused
- Transformative through Innovation
- Data-Informed
- Collaborative
- Steward of Public Trust



MISSION: *The Court serves our community by providing equal access to justice through fair, timely, and effective resolution of cases.*



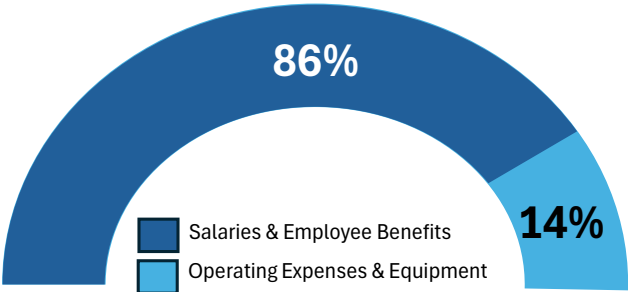
VISION: *Our Court will be accessible to all, trusted by all, and just for all.*

SAMPLE INITIATIVES

- Refreshed Website
- Reimagined User Experience
- Increased Remote Access
- Reduced Case Backlogs
- Data Transparency
- Community Engagement
- Modern & Secure Infrastructure
- Professional Development

BUDGET AT A GLANCE

FISCAL YEAR 2025-26 BUDGET
\$1.075 Billion



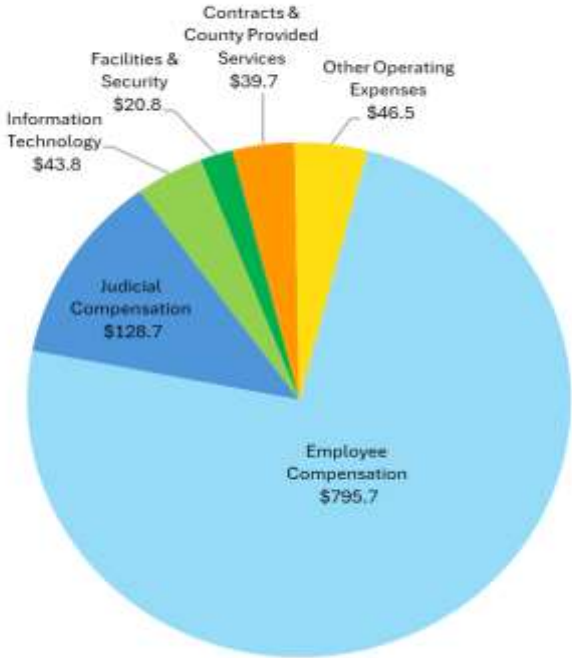


510 Authorized Judicial Positions



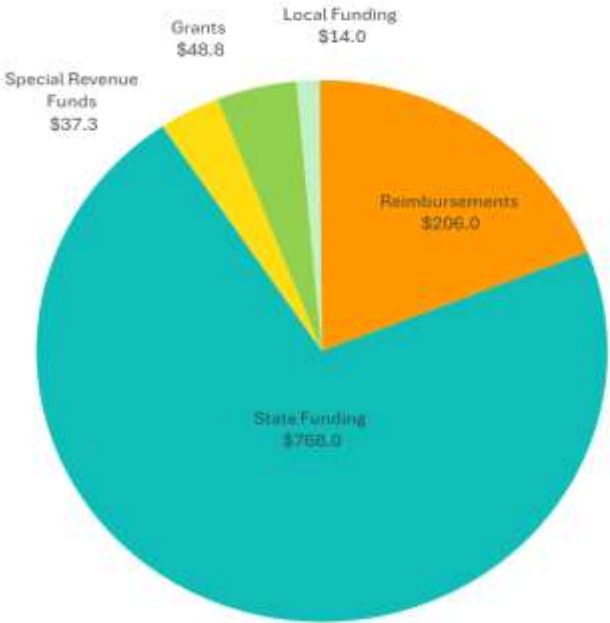
5,108 Authorized Positions

Expenditures Budget



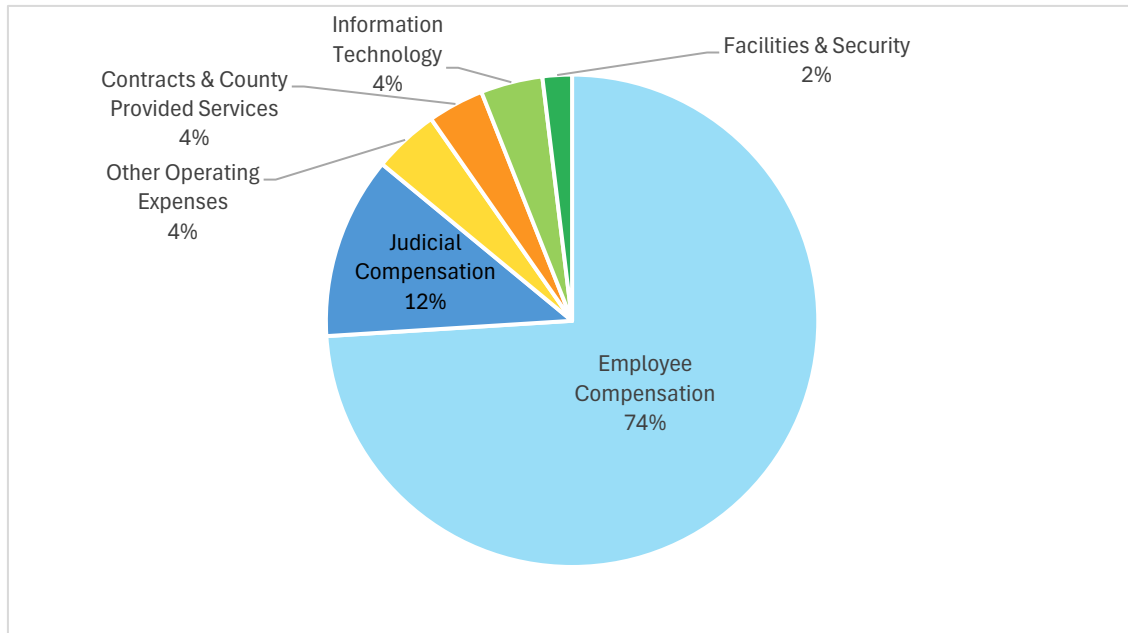
Revenue Budget

In Millions



FINANCING USES / EXPENDITURES

Employee Compensation	795,694,000
Judicial Compensation	128,709,000
Other Operating Expenses	46,451,000
Contracts & County Provided Services	39,736,000
Information Technology	43,796,000
Facilities & Security	20,771,000
TOTAL	1,075,157,000

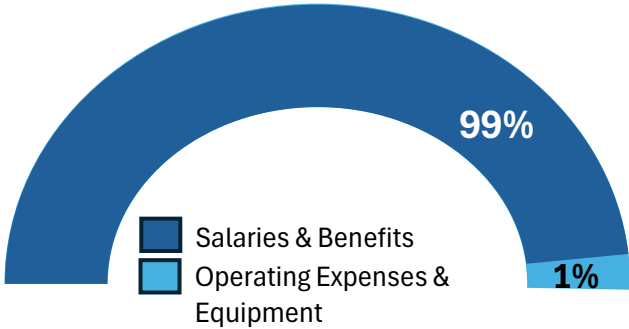


JUDGES AND EXECUTIVE OFFICE

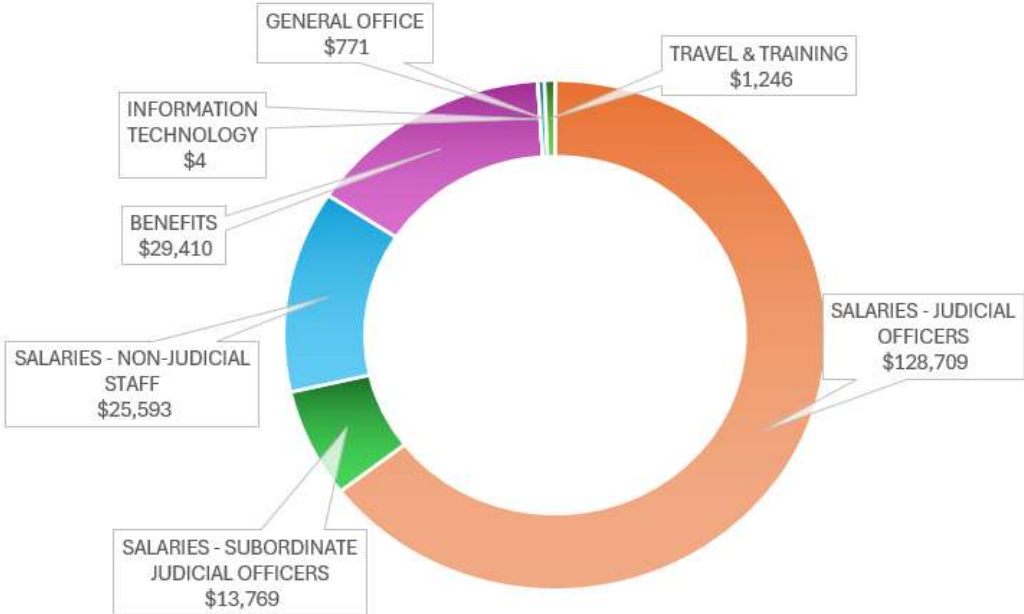
FY 2025-26 BUDGET
\$199,502,000

% OF TOTAL COURT BUDGET
18.56%

BUDGETED POSITIONS
573



Expenditures Budget Breakdown

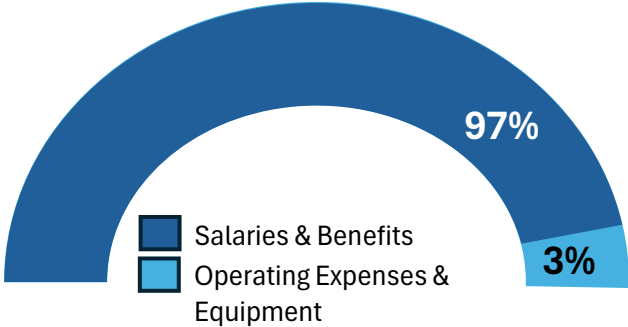


JUDICIAL AND EXECUTIVE SUPPORT

FY 2025-26 BUDGET
\$4,385,000

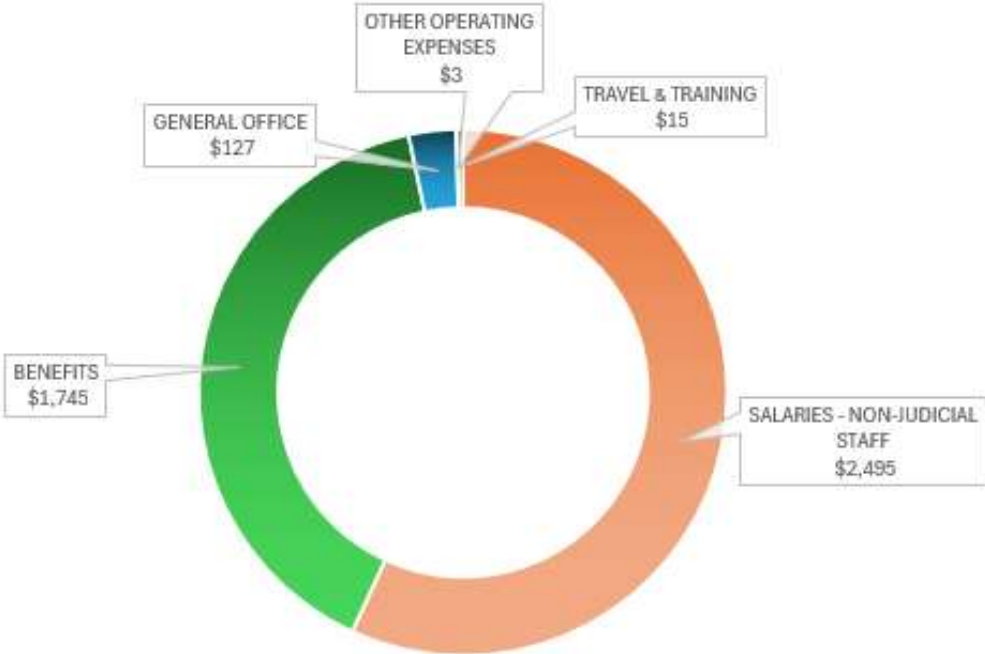
% OF TOTAL COURT BUDGET
<1%

BUDGETED POSITIONS
28



Expenditures Budget Breakdown

In Thousands

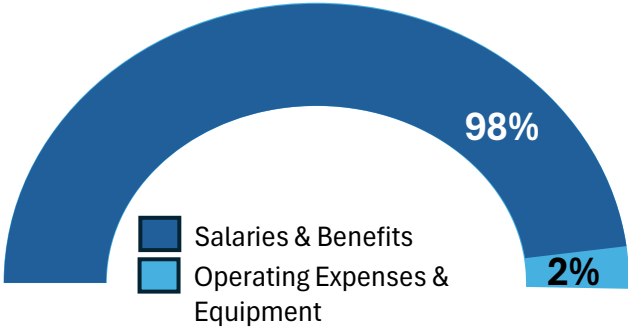


OFFICE OF COURT STRATEGY AND INNOVATION

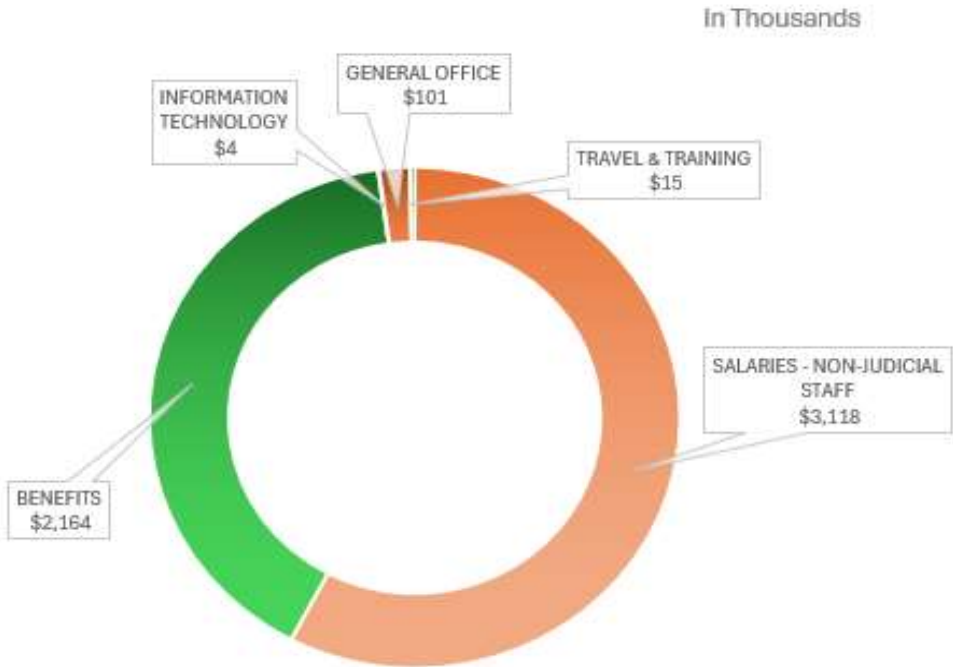
FY 2025-26 BUDGET
\$5,402,000

% OF TOTAL COURT BUDGET
<1%

BUDGETED POSITIONS
24



Expenditures Budget Breakdown

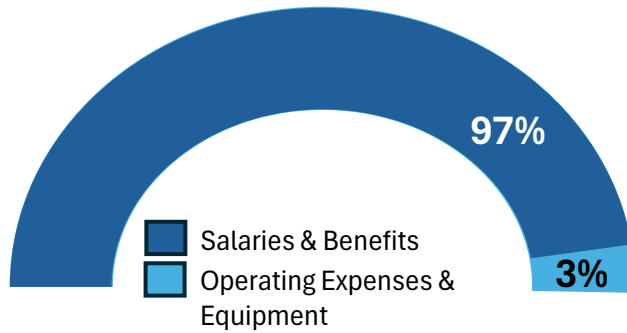


COMMUNICATIONS AND EXTERNAL AFFAIRS

FY 2025-26 BUDGET
\$3,583,000

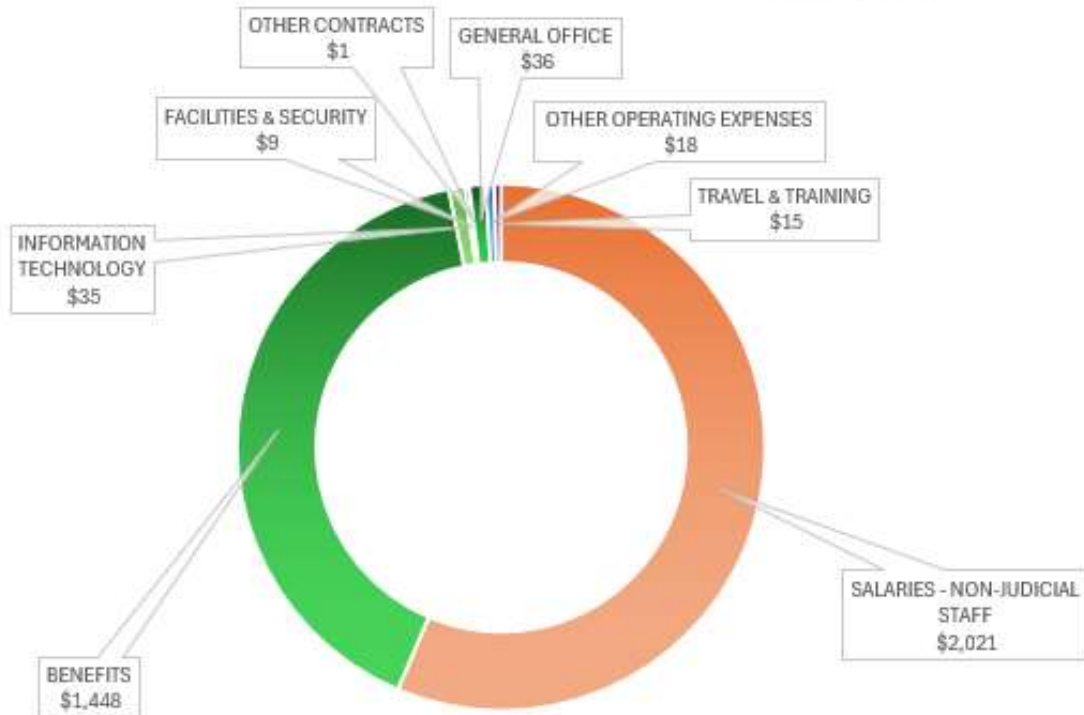
% OF TOTAL COURT BUDGET
<1%

BUDGETED POSITIONS
15



Expenditures Budget Breakdown

In Thousands

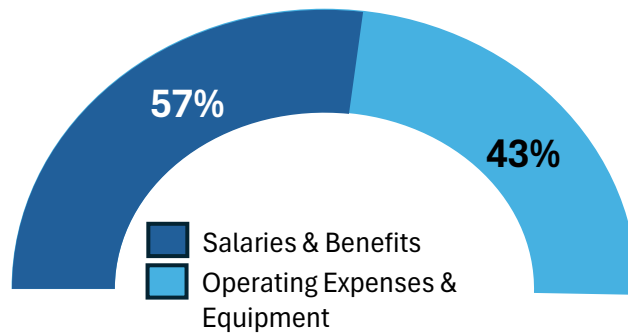


FINANCE AND ADMINISTRATION

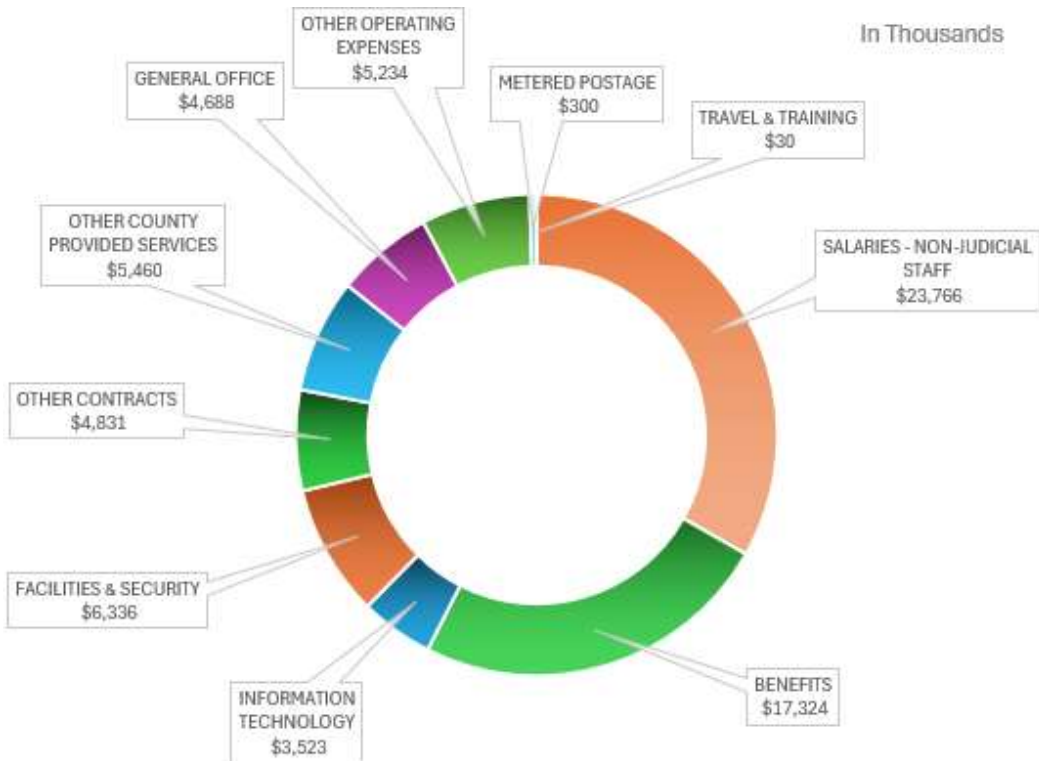
FY 2025-26 BUDGET
\$71,492,000

% OF TOTAL COURT BUDGET
6.65%

BUDGETED POSITIONS
254



Expenditures Budget Breakdown

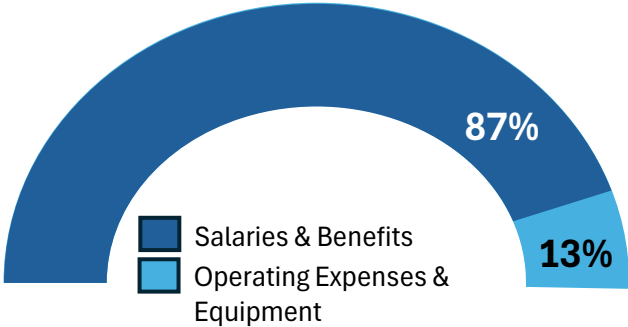


HUMAN RESOURCES

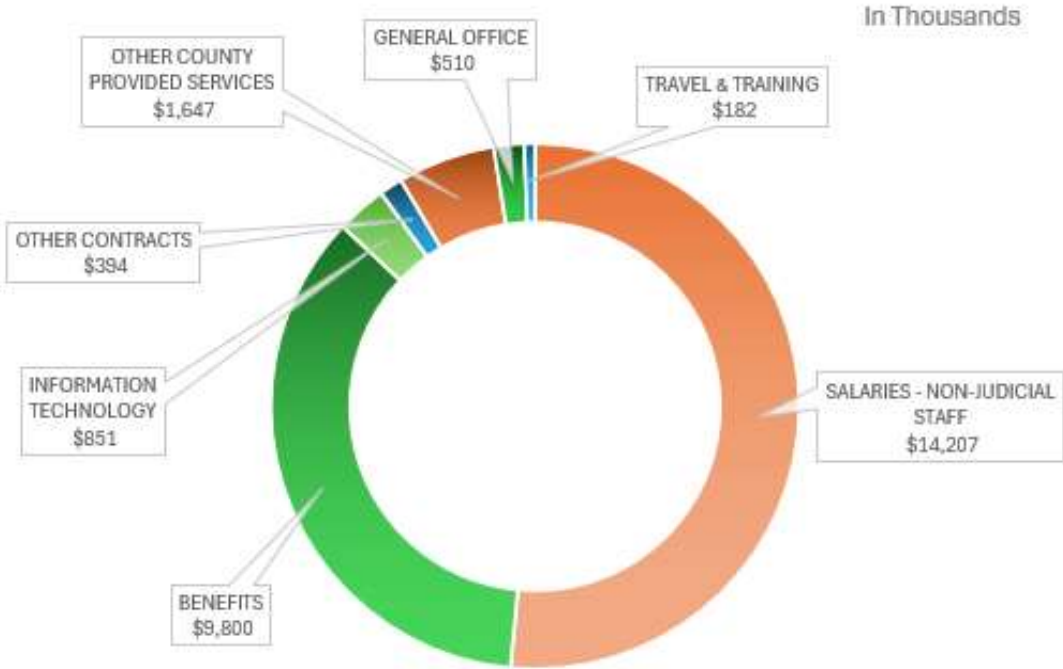
FY 2025-26 BUDGET
\$27,591,000

% OF TOTAL COURT BUDGET
2.57%

BUDGETED POSITIONS
130



Expenditures Budget Breakdown

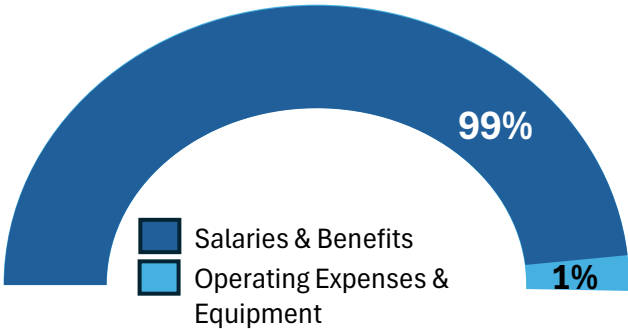


GENERAL COUNSEL OFFICE

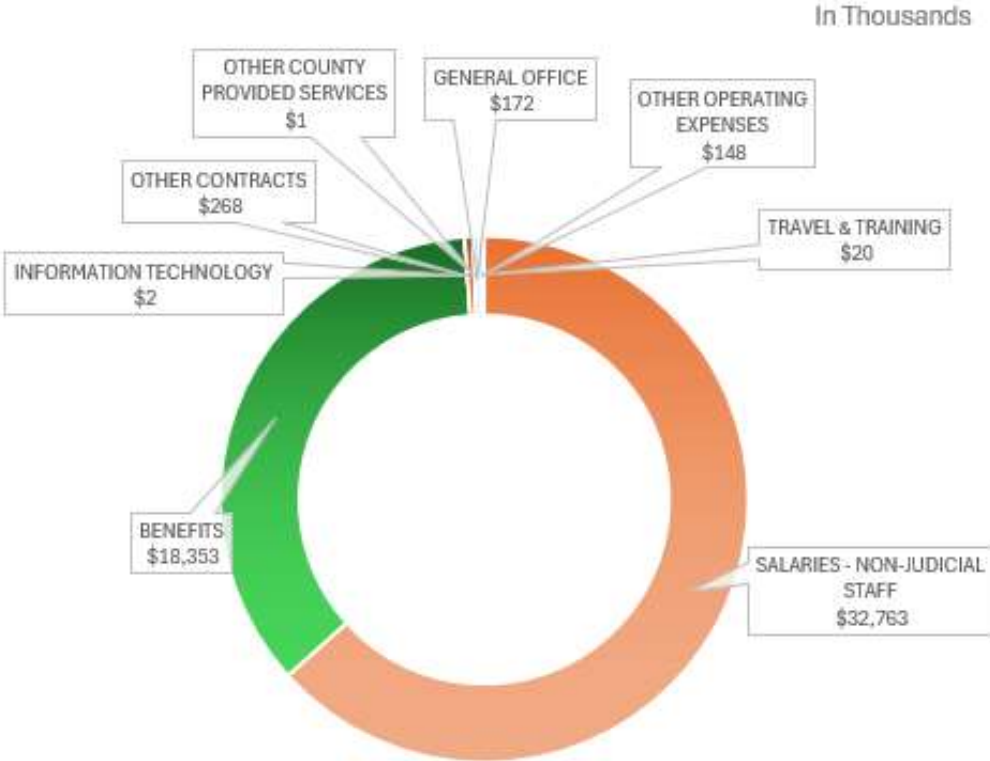
FY 2025-26 BUDGET
\$51,727,000

% OF TOTAL COURT BUDGET
4.81%

BUDGETED POSITIONS
241



Expenditures Budget Breakdown

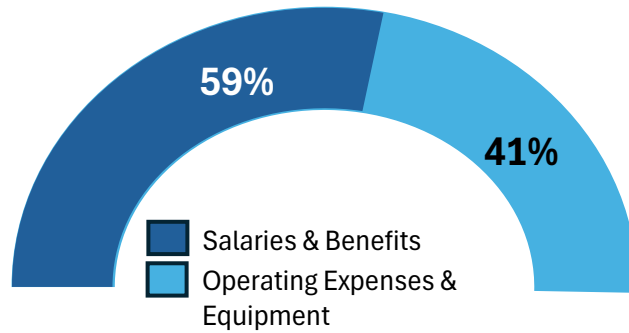


COURT TECHNOLOGY SERVICES

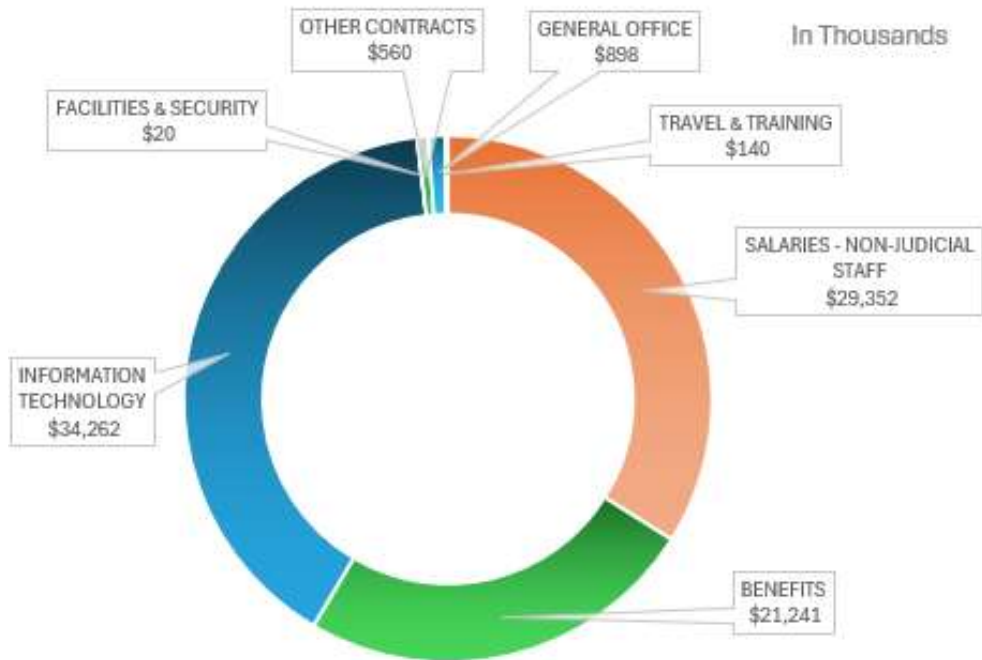
FY 2025-26 BUDGET
\$86,473,000

% OF TOTAL COURT BUDGET
8.04%

BUDGETED POSITIONS
247



Expenditures Budget Breakdown

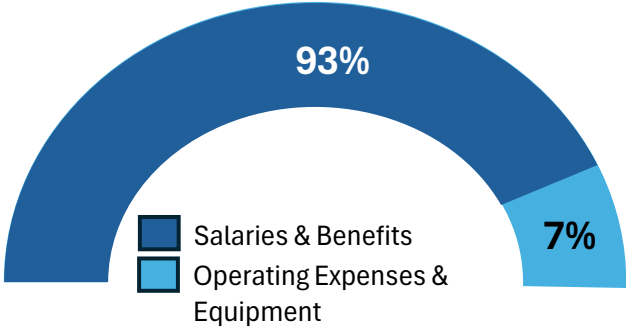


OPERATIONS

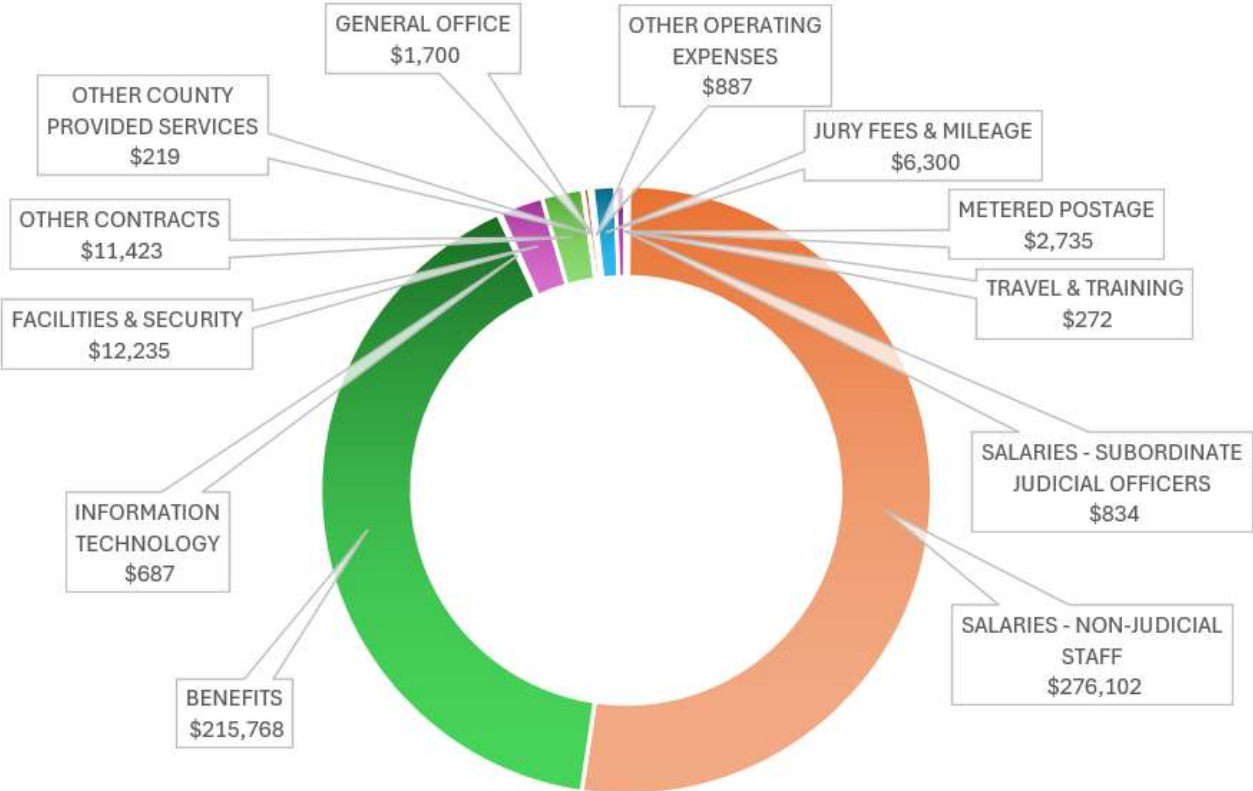
FY 2025-26 BUDGET
\$529,162,000

% OF TOTAL COURT BUDGET
49.22%

BUDGETED POSITIONS
3,829



Expenditures Budget Breakdown

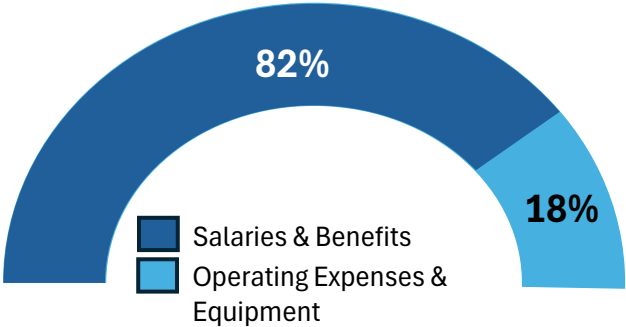


OPERATIONS ADMINISTRATION

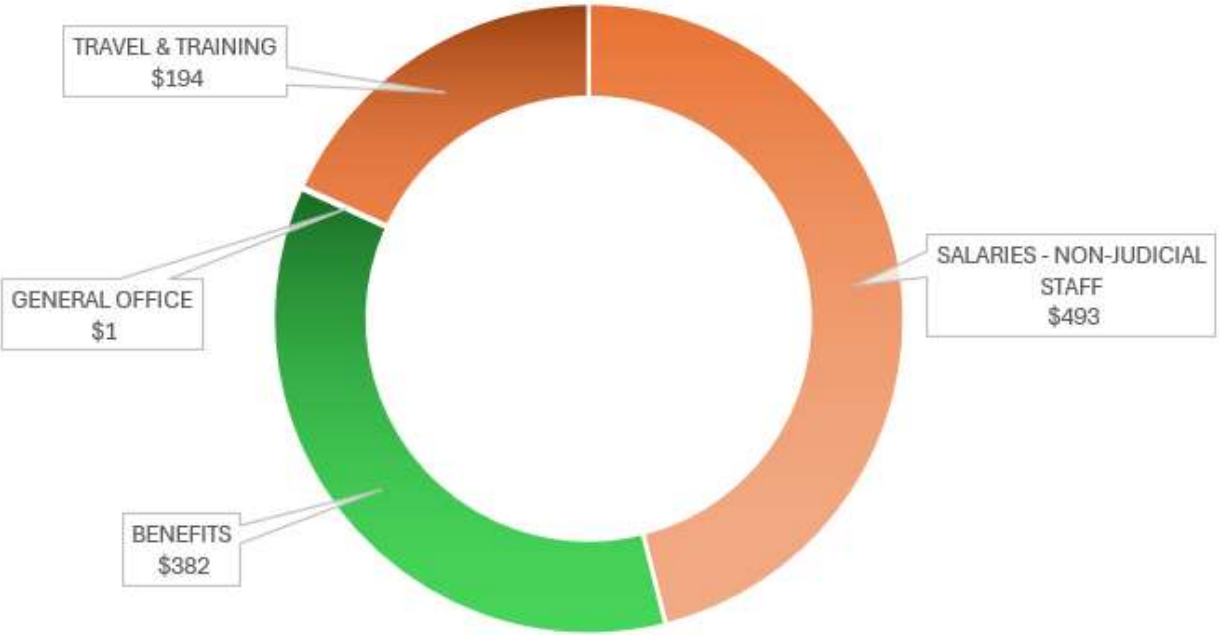
FY 2025-26 BUDGET
\$1,070,000

% OF TOTAL COURT BUDGET
<1%

BUDGETED POSITIONS
2



Expenditures Budget Breakdown

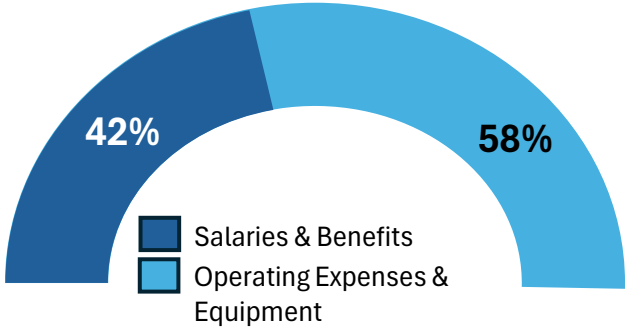


JUROR SERVICES

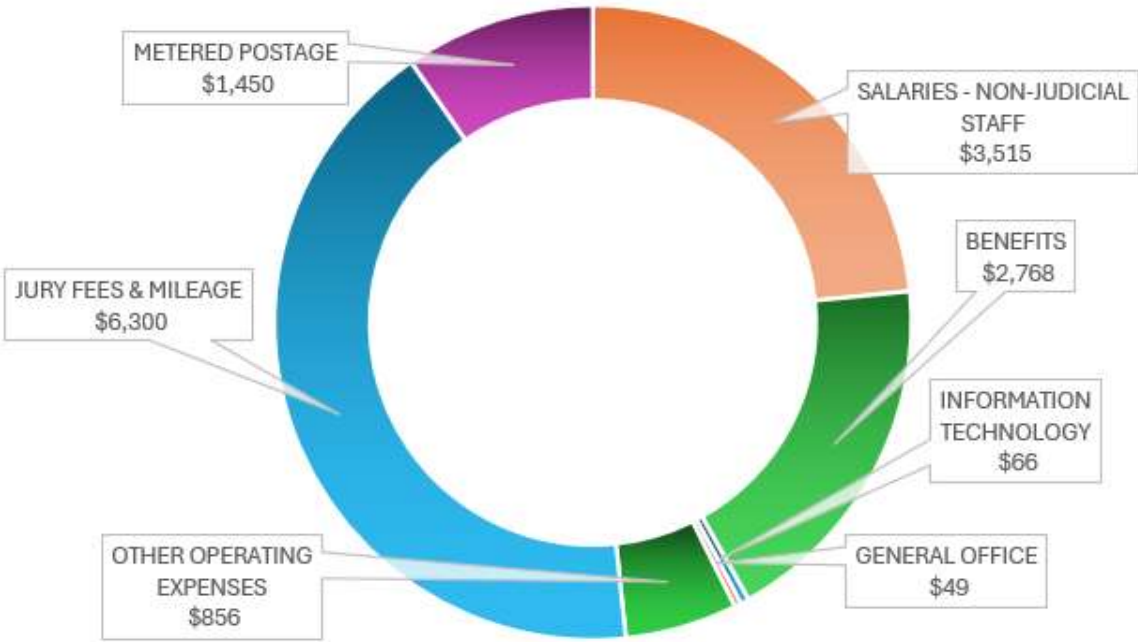
FY 2025-26 BUDGET
\$15,004,000

% OF TOTAL COURT BUDGET
1.40%

BUDGETED POSITIONS
51



Expenditures Budget Breakdown

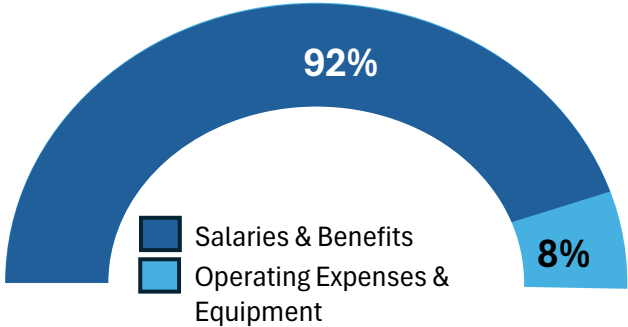


REGION 1

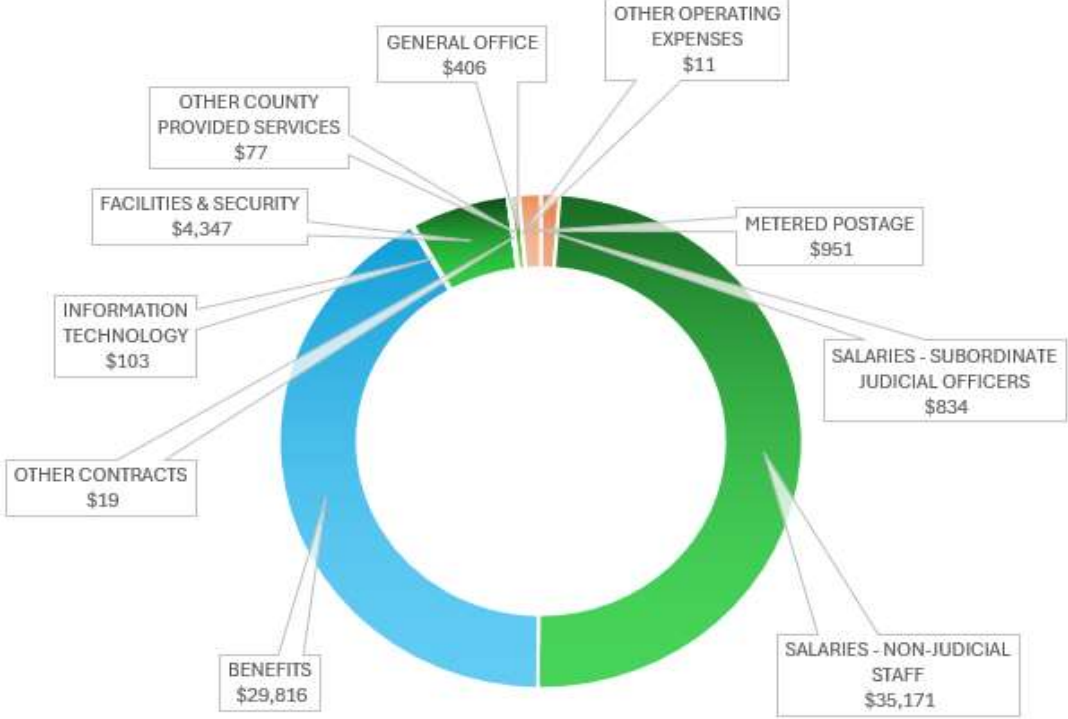
FY 2025-26 BUDGET
\$71,735,000

% OF TOTAL COURT BUDGET
6.67%

BUDGETED POSITIONS
549



Expenditures Budget Breakdown

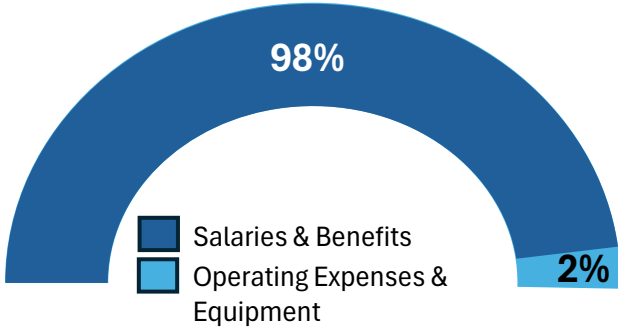


REGION 2

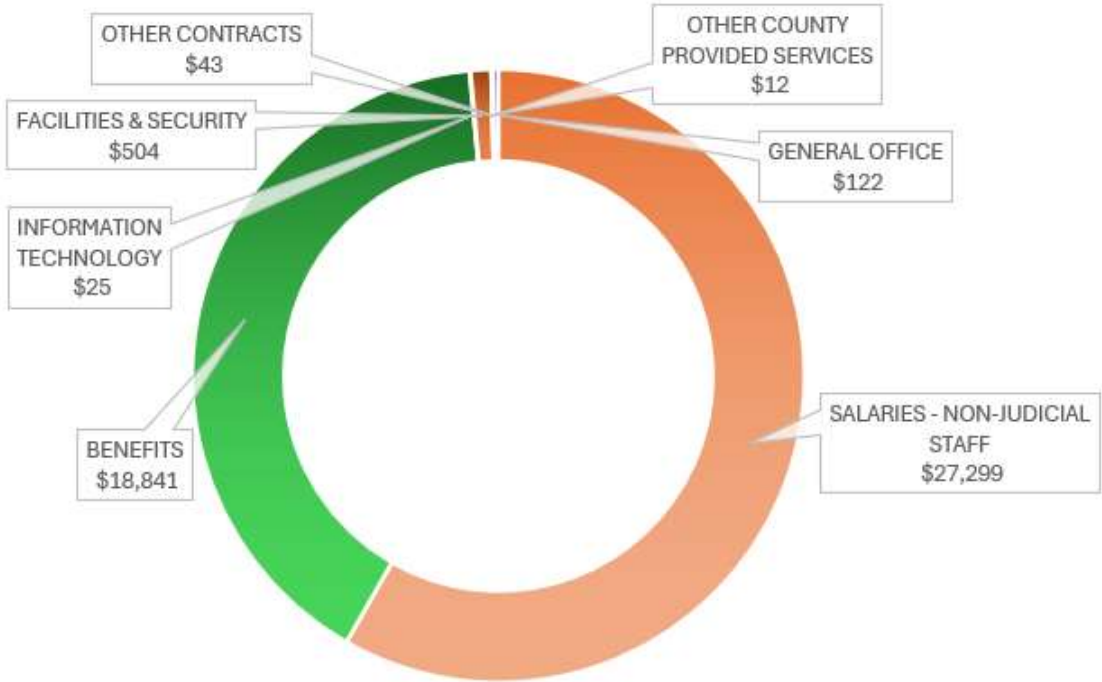
FY 2025-26 BUDGET
\$46,846,000

% OF TOTAL COURT BUDGET
4.36%

BUDGETED POSITIONS
326



Expenditures Budget Breakdown

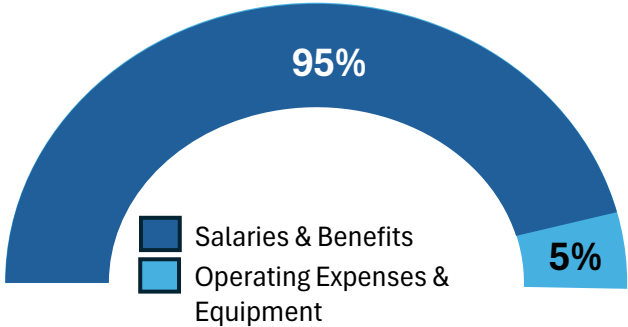


REGION 3

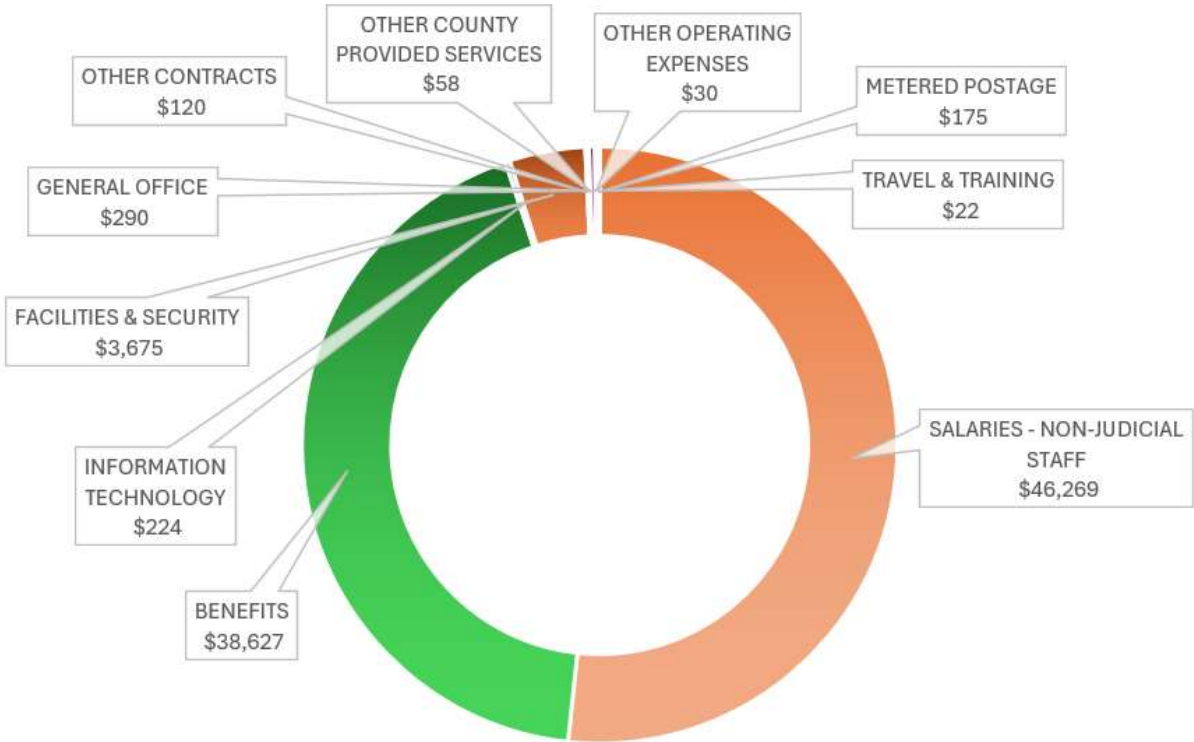
FY 2025-26 BUDGET
\$89,490,000

% OF TOTAL COURT BUDGET
8.32%

BUDGETED POSITIONS
736



Expenditures Budget Breakdown

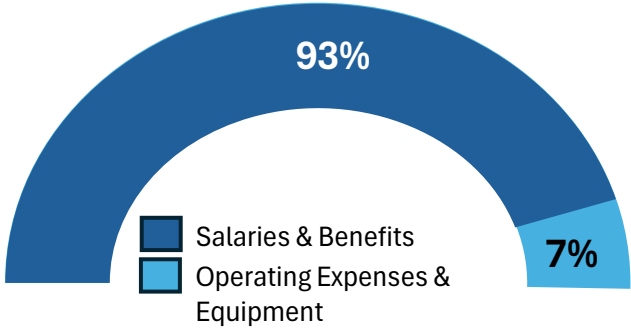


REGION 4

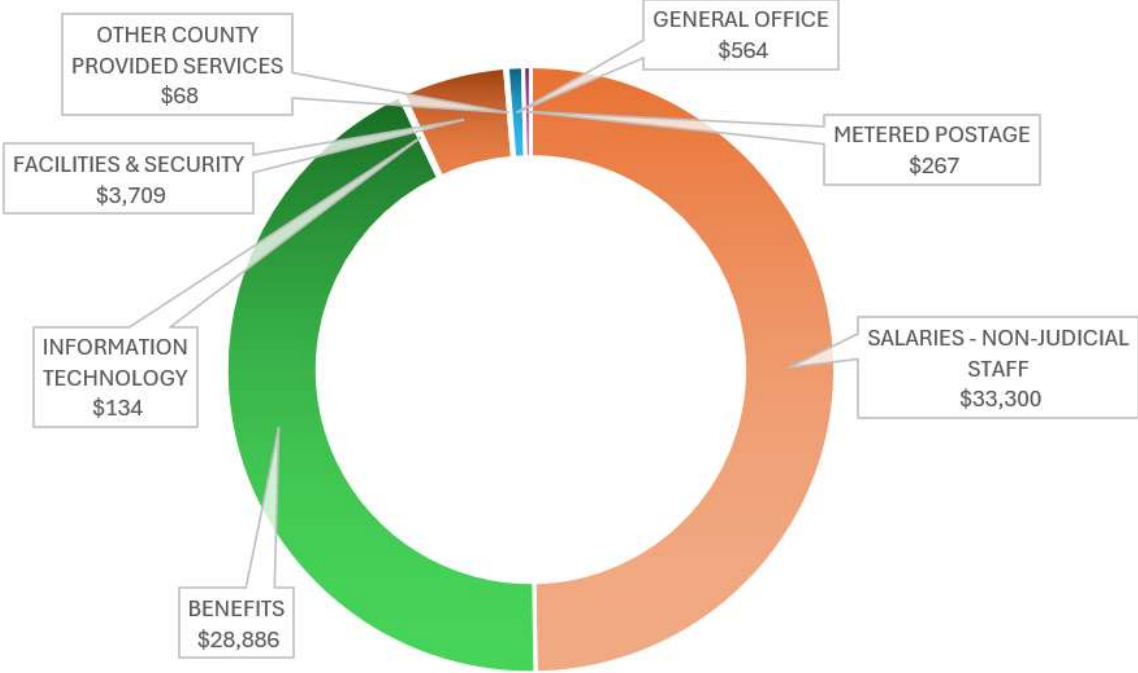
FY 2025-26 BUDGET
\$66,928,000

% OF TOTAL COURT BUDGET
6.22%

BUDGETED POSITIONS
512



Expenditures Budget Breakdown

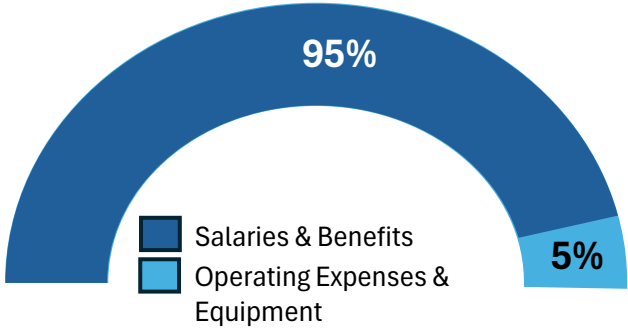


COURTROOM SUPPORT

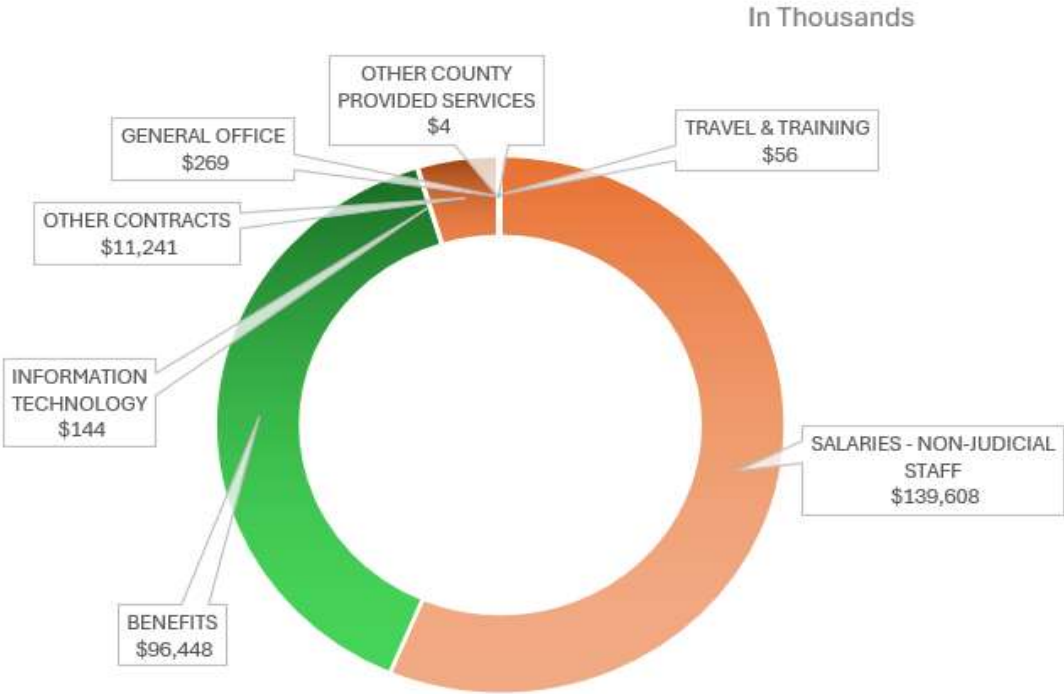
FY 2025-26 BUDGET
\$247,770,000

% OF TOTAL COURT BUDGET
23.05%

BUDGETED POSITIONS
1,653



Expenditures Budget Breakdown

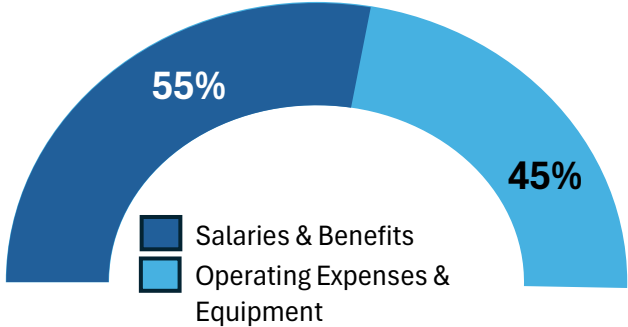


GRANTS

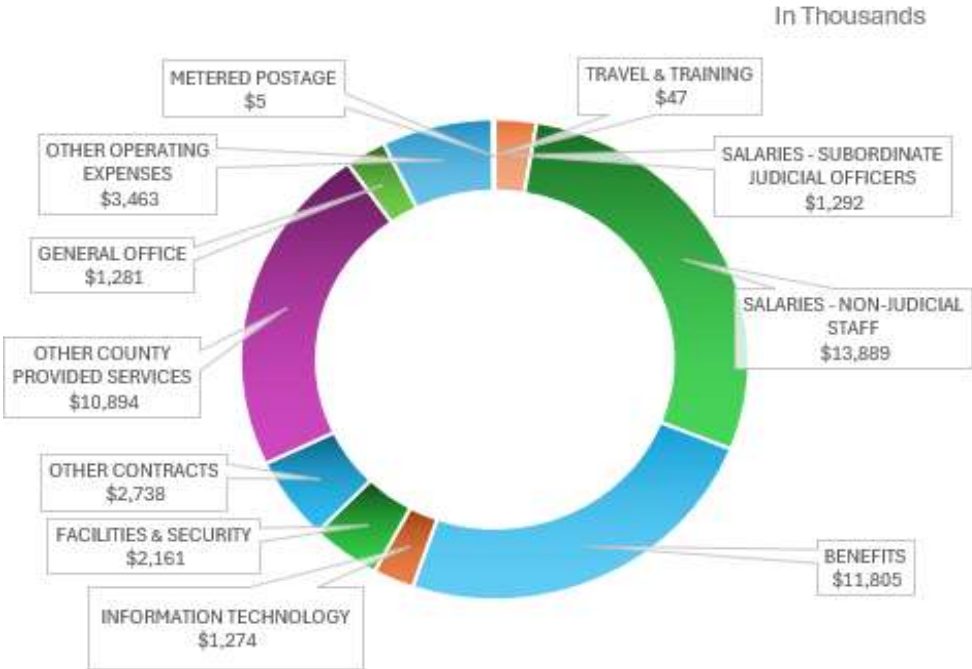
FY 2025-26 BUDGET
\$48,849,000

% OF TOTAL COURT BUDGET
4.54%

BUDGETED POSITIONS
203



Expenditures Budget Breakdown

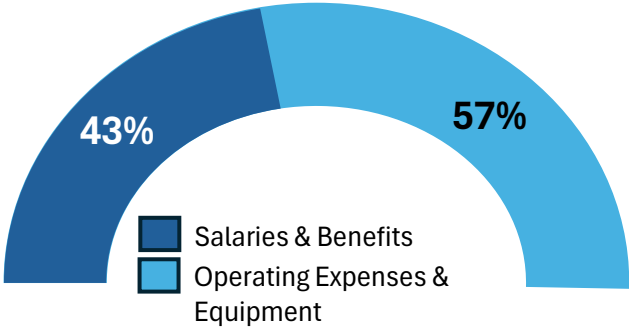


SPECIAL REVENUE FUNDS

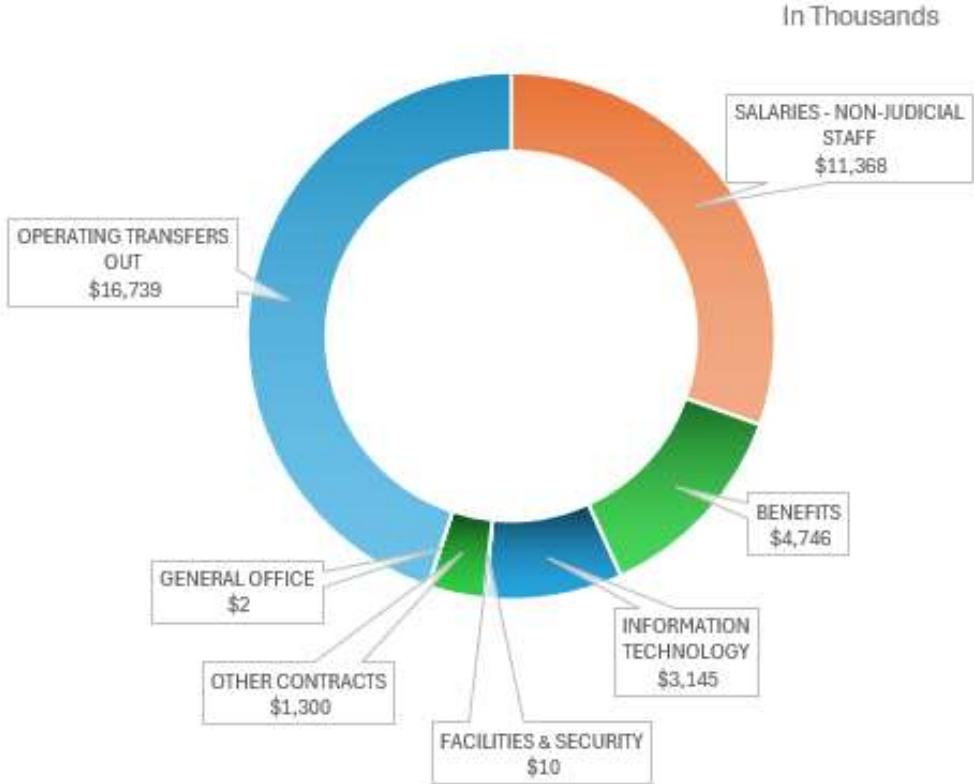
FY 2025-26 BUDGET
\$37,310,000

% OF TOTAL COURT BUDGET
3.47%

BUDGETED POSITIONS
74



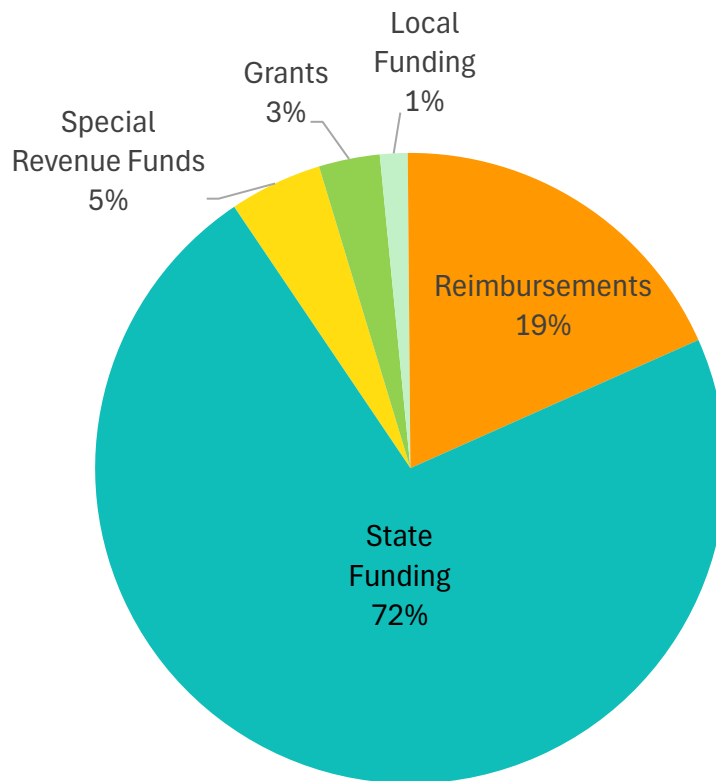
Expenditures Budget Breakdown



REVENUE SOURCES

State Funding	768,891,000
Reimbursements	206,157,000
Special Revenue Funds	37,310,000
Local Funding	13,952,000
Grants	48,847,000
TOTAL	1,075,157,000

Revenue



COURT FUNDING SOURCES

State Funding	768,891,000
Reimbursements	206,157,000
Special Revenue Funds	37,310,000
Grants	48,847,000
Local Funding	13,952,000
	1,075,157,000

State Funding

The primary funding source for trial courts, distributed by the Judicial Council through the Trial Court Trust Fund. This covers core court operations including personnel, services, supplies, and baseline operational needs.

Unrestricted Allocation	768,891,000
-------------------------	--------------------

Reimbursement

Funds the courts receive for functions that may be governed by statute and eligible for reimbursement—often tied to mandated programs, statewide initiatives, etc.

Judicial Salaries & Benefits	138,129,000
Court Interpreters Program	38,574,000
State Programs (Including Self-Help)	17,653,000
County Reimbursement	3,751,000
Jury Fees & Mileage	6,300,000
Civil Transcripts	1,000,000
Shared Services	750,000
	206,157,000

Special Revenue Funds

Restricted funds generated from specific fees, fines, assessments, or earmarked revenue streams that can only be used for their designated purposes.

Public Access	16,739,000
Court Reporter Revolving Fund	14,202,000
2% Automation	5,057,000
Children's Waiting Room	1,300,000
Jury Fee Donation	12,000
	37,310,000

Grants

Funding from federal, state, county or other entities. Grants typically support mandated functions, targeted projects, innovation programs, technology improvements, or pilot initiatives.

Judicial Council	17,127,000
Pretrial	14,914,000
State	14,112,000
County	2,694,000
	48,847,000

Local Funding

These are revenues generated at the local court level that are not part of state allocations. They can include locally retained fees authorized by statute, non-fee revenue such as donations, cost recoverable items and other miscellaneous revenue sources. These funds are generally limited in scope and may be restricted to specific uses depending on statutory requirements or local policy.

Fees	8,696,000
Interest Income	4,256,000
Escheatment	1,000,000
	13,952,000